



Kubota

FALL 2023

GET IT DONE



&

THEN SOME

FRESH FALL LINEUP



LX20



Z200-2



Kubota

FALL 2023

GET IT DONE



&

THEN SOME

FRESH FALL LINEUP



LX20

Z200-2

Instagram Facebook YouTube | KUBOTA.CA

GET MORE DONE IN A BX80

SUB-COMPACT AND FULLY CAPABLE



16.6 - 24.8 HP



KUBOTA DIESEL ENGINE



PREMIUM RECLINING
HIGH-BACK SEAT



SWIFT-TACH LOADER



K-CONNECT FOR
FRONT IMPLEMENTS



SAVE \$1,000

\$89

BI-WEEKLY

0%

FINANCING¹

\$0

DOWN PAYMENT

+ SAVE UP TO
\$900

WHEN YOU PURCHASE
SELECT ATTACHMENTS[†]

0% FOR 84 MONTHS FINANCING OAC¹

¹Pricing is for tractor only. Mid mount mower and Quick Hitch not included.

GET INTO A BX23S

READY TO GO TO WORK
LOADING, MOWING,
DIGGING AND MORE



21.6 HP



KUBOTA DIESEL ENGINE



PREMIUM RECLINING
HIGH-BACK SEAT



SWIFT-TACH LOADER



K-CONNECT FOR
FRONT IMPLEMENTS



COMES STANDARD WITH
LOADER AND BACKHOE



SAVE \$1,500

\$175

BI-WEEKLY

+ SAVE UP TO
\$600

WHEN YOU PURCHASE
SELECT ATTACHMENTS^{††}

0% FOR 84 MONTHS FINANCING OAC² (1.95%) EFFECTIVE APR / \$910 DOWN PAYMENT

+ DISCOUNT OF
\$300
OFF SELECT LAND PRIDE
AND RAD TECH ATTACHMENTS[†]



LOADERS



GRADING SCRAPER



REAR BLADE



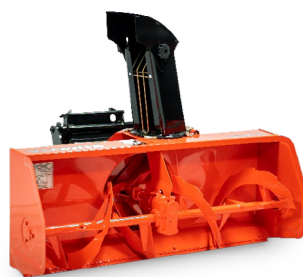
CLAW GRAPPLES



**POST HOLE
DIGGERS**



**ROTARY
TILLER**



**K-CONNECT FRONT
SNOWBLOWER**



**REAR MOUNT
SNOWBLOWER**



BX HEATED CAB

0% FOR 84 MONTHS

FINANCING OAC ON SELECT ATTACHMENTS WHEN PURCHASED WITH A TRACTOR.³

COMPACT & MIGHTY B01 SERIES + LOADER

COMPACT TRACTOR



20.9-24.3 HP



KUBOTA DIESEL ENGINE



LARGE, ISO-MOUNTED
FLAT DECK FOR COMFORT



K-CONNECT FOR
FRONT IMPLEMENTS



SAVE \$600

\$295
MONTHLY

+ SAVE UP TO
\$900
WHEN YOU PURCHASE
SELECT ATTACHMENTS†

*Pricing is for tractor and loader only. Rotary Cutter not included.

*0% FOR 84 MONTHS FINANCING OAC⁴ (2.10%) EFFECTIVE APR / \$3,491 DOWN PAYMENT

L01 SERIES + LOADER



ALL-IN ON ADAPTABILITY



24.8-47.3 HP



ERGONOMIC SEAT DESIGN



SMOOTH OPERATION IN HST OR
GEAR DRIVE CONFIGURATIONS

SAVE \$600

\$385
MONTHLY

0% FOR 84 MONTHS
FINANCING OAC⁵
(2%) EFFECTIVE RATE

\$3,431 DOWN PAYMENT
*Pricing is for tractor and loader only.
Rotary Cutter not included.

GRASS KEEPS GROWING WE KEEP MOWING

LAST CHANCE TO GET THE BEST CUT OF THE SEASON

ZERO TURN MOWER



21.5-25 HP



UP TO 3 ACRES



MOW IN TOTAL
K-RIDE COMFORT



K-LIFT PUSH & RELEASE
LIFT & LOWERING
DECK SYSTEM



3 CUTTING SIZES
AVAILABLE:
42", 48" OR 54"



THE ALL-NEW

Z2200

SAVE \$400

\$84

BI-WEEKLY

\$0

DOWN PAYMENT

0% FOR 36 MONTHS FINANCING OAC⁶ / (1.59%) EFFECTIVE RATE

T90 SERIES

ALL SEASON VERSATILITY



SAVE \$350

\$76

BI-WEEKLY

\$0

DOWN PAYMENT

+ SAVE UP TO
\$400

WHEN YOU PURCHASE
SELECT ATTACHMENTS^{†††}

0% FOR 36 MONTHS FINANCING OAC⁸ (1.55%) EFFECTIVE APR

GR SERIES


GLIDE STEER TECHNOLOGY

+ SAVE UP TO
\$400


WHEN YOU PURCHASE
SELECT ATTACHMENTS^{†††}



PREMIUM LAWN TRACTOR

 17 - 20.5 HP

 OUTSTANDING
ALL-WHEEL DRIVE
TRACTION

 EFFICIENT
48" OR 54"
MOWER DECK

COMFORT. QUALITY. VERSATILITY.

LX10 SERIES



SAVE \$600

\$425
MONTHLY

+ SAVE UP TO
\$900
WHEN YOU PURCHASE
SELECT ATTACHMENTS*

0% FOR 84 MONTHS FINANCING OAC⁷ (1.94%) EFFECTIVE APR / \$4,257 DOWN PAYMENT

JUST

RIGHT



THE ALL-NEW

LX20

COMPACT TRACTOR



35 - 40 HP



BUILT FOR MATERIAL HANDLING,
LOADER WORK, SNOW REMOVAL,
AND PROPERTY MAINTENANCE



SPACIOUS & COMFORTABLE
PREMIUM CAB



PERFORMANCE-MATCHED
LA545 LOADER



DUAL ENGINE MEMORY SWITCH

GREAT
FALL DEALS
NOW AVAILABLE



For all offers: Prices and payments include freight and other applicable fees (including environmental fees, administration fees, set-up fees, and dealer fees). Taxes, delivery fees, insurance and registration are extra. Dealer may sell for less. Dealer order/trade may be necessary (but may not be available in all cases). Some restrictions apply. Offers valid only at participating dealers in Canada and are subject to change, cancellation or extension at any time without notice or obligation. Minimum down payment of 10% required for financing offers on turf and agricultural products. Specifications, features, illustrations and equipment shown are based on the latest available information at the time of publication. Some models are shown with optional accessories available at extra cost. 1 Representative finance example for the BX1880V-1: \$16,125.00 financed at 0% equals \$89.00 bi-weekly for 84 months, which takes into account \$1,000.00 in stackable discounts. \$0 down payment required. Cost of borrowing is \$0 for a total obligation of \$16,125.00. 182 payments required bi-weekly for 84 months. Financing available on approved credit. † Discounts on select LandPride and RadTech attachments for this tractor are \$300 each, up to a maximum of \$900. Discount(s) apply before tax and require the purchase of the power unit. Attachments purchased individually do not qualify for this discount. †† Discounts on select LandPride and RadTech attachments for this tractor are \$300 each, up to a maximum of \$900. Discount(s) apply before tax and require the purchase of the power unit. Attachments purchased individually do not qualify for this discount. 2 BX23SLBB-T-1: \$32,823.00 financed at 0% (1.95% effective APR which factors in \$1,500.00 in stackable cash, plus \$2,068.56 in non-stackable cash that cannot be combined with finance offers) equals \$175.00 bi-weekly for 84 months. \$909.76 down payment required. Cost of borrowing is \$2,068.56 for a total obligation of \$32,823.00. 182 bi-weekly payments required for 84 months. Financing available on approved credit. †† Discounts on select LandPride and RadTech attachments for this tractor are \$300 each, up to a maximum of \$900. Discount(s) apply before tax and require the purchase of the power unit. Attachments purchased individually do not qualify for this discount. 3 Representative finance example for the BX1880V-1: \$16,125.00 financed at 0% equals \$89.00 bi-weekly for 84 months, which takes into account \$1,000.00 in stackable discounts. \$0 down payment required. Cost of borrowing is \$0 for a total obligation of \$16,125.00. 182 payments required bi-weekly for 84 months. Financing available on approved credit. 4 Discount(s) available on a new and previously unregistered B01 is \$900. Offer applies to the bundled package consisting of: (i) B2301HSD-1 power unit; and (ii) LA435 loader. Components of the Bundle may be purchased separately, as follows: (i) B2301HSD-1 \$22,922.00; and (ii) LA435 loader; \$4,566.00; Representative finance example for the Bundle: \$27,478.00 financed at 0% (2.10% effective APR which factors in \$1,714.63 in non stackable cash that cannot be combined with finance offers) equals \$295.00 per month for 84 months. \$3,491.00 down payment required. Cost of borrowing is \$1,714.63 for a total obligation of \$27,478.00. Financing available on approved credit. 5 Offer applies to the bundled package consisting of: (i) L2501HST power unit; and (ii) LA526FL loader. Components of the Bundle may be purchased separately, as follows: (i) L2501HST \$26,020.00; and (ii) LA526FL loader; \$8,272.00; Representative finance example for the Bundle: \$35,771.00 financed at 0% (2.00% effective APR which factors in \$600.00 in stackable cash, plus \$2,139.82 in non stackable cash that cannot be combined with finance offers) equals \$385.00 per month for 84 months. \$3,431.18 down payment required. Cost of borrowing is \$2,139.82 for a total obligation of \$35,771.00. 6 Z202 (Z232KW-42): Discount(s) available on a new and previously unregistered Z200 is \$400. \$6,566.00 financed at 0% (1.59 % effective APR which factors in \$400.00 in stackable cash, plus \$151.75 in non stackable cash that cannot be combined with finance offers) equals \$84.00 bi-weekly payments for 36 months. 78 payments required bi-weekly for 36 months. \$0 down payment required. Cost of borrowing is \$151.75 for a total obligation of \$6,566.00. 7 LX2610HSDCC: \$39,957.00 financed at 0% (1.94% effective APR which factors in \$600.00 in stackable cash, plus \$2,283.59 in non-stackable cash that cannot be combined with finance offers) equals \$242.00 bi-weekly payments for 36 months. 78 payments required bi-weekly for 36 months. \$0 down payment required. Cost of borrowing is \$2,283.59 for a total obligation of \$39,957.00. 8 Discount(s) available on a new and previously unregistered T90 is \$350. Representative finance example for the T90 (T2090BR-42): \$5,871.00 financed at 0% (1.55% effective APR which factors in \$350.00 in stackable cash, plus \$133.94 in non stackable cash that cannot be combined with finance offers) equals \$76.00 bi-weekly payments for 36 months. 78 payments required bi-weekly for 36 months. \$0 down payment required. Cost of borrowing is \$133.94 for a total obligation of \$5,871.00. ††† T90 / GR attachment discount Discounts on select LandPride and RadTech attachments for the GR or the T90 are \$400 each, up to a maximum of \$400. Discount(s) apply before tax and require the purchase of the power unit. Attachments purchased individually do not qualify for this discount. Offers cannot be applied on past transactions, and have no cash surrender value. Although descriptions are believed to be correct, accuracy cannot be guaranteed. We reserve the right to make changes at any time, without notice or obligation to specifications, accessories, materials, models, prices, payments and other information. Offers valid until 30 November 2023. See your participating Kubota dealer or visit www.kubota.ca for complete details.

COMFORT. QUALITY. VERSATILITY.
LX10 SERIES



SAVE \$600

\$425
MONTHLY

**+ SAVE UP TO
\$900**
WHEN YOU PURCHASE
SELECT ATTACHMENTS†

0% FOR 84 MONTHS FINANCING OAC⁷ (1.94%) EFFECTIVE APR / \$4,257 DOWN PAYMENT

**JUST
RIGHT**



THE ALL-NEW

LX20

COMPACT TRACTOR



35 - 40 HP



**BUILT FOR MATERIAL HANDLING,
LOADER WORK, SNOW REMOVAL,
AND PROPERTY MAINTENANCE**



**SPACIOUS & COMFORTABLE
PREMIUM CAB**



**PERFORMANCE-MATCHED
LA545 LOADER**



DUAL ENGINE MEMORY SWITCH

**GREAT
FALL DEALS
NOW AVAILABLE**

A PREMIUM CUT EVERY TIME

ZD1600 SERIES

ZERO TURN MOWER



30.8 HP



KUBOTA DIESEL ENGINE



FULL-FLAT
OPERATOR PLATFORM



KUBOTA PRO 60" OR 72"
MOWER DECKS



Z700 SERIES



PERFORMANCE, PRODUCTIVITY & COMFORT



23.0-29.5 HP



ADJUSTABLE PREMIUM
SUSPENSION SEAT



TRANSMISSION WITH
INTEGRATED PUMP AND MOTOR

STARTING AT

\$13,107

Attachments are extra.

GREAT FALL DEALS NOW AVAILABLE

RTV-X SERIES

RTV-X1100C

CANADIAN WINTER READY



21.6-24.8 HP



**POWERFUL KUBOTA
DIESEL ENGINE**



**POWER MODULE
& PTO K-CONNECT**



**HYDRAULIC POWER
STEERING**



**HYDRAULIC DUMPING
CARGO BOX**



SNOWBLOWER



V-BLADE



STRAIGHT BLADE



SWEEPER



SALT & SAND SPREADER

**GREAT FALL DEALS
NOW AVAILABLE**

M7-2 SERIES

GETS THE JOB DONE,
COMFORTABLY.

2.99 %

FINANCING FOR 84 MONTHS

(4.65%)

EFFECTIVE APR⁹



MAINTENANCE INCLUDED

**FOR 4 YEARS/4000H AND 6 YEARS/4000H
POWERTRAIN WARRANTY ON THE M7¹⁰**

ALL THE POWER YOU NEED TO GET THE BIG JOBS DONE.



128-168 HP



ORANGE PLUS - WARRANTY AND MAINTENANCE



**THE M7 PREMIUM KVT (KUBOTA VARIABLE
TRANSMISSION) OPTIMIZES FUEL ECONOMY
AND OFFERS SMOOTHER, MORE CONSISTENT
ACCELERATION**



**COMFORTABLE SEAT EQUIPPED WITH AIR
SUSPENSION, DEPTH AND TILT ADJUSTMENTS,
CONSTANT SWIVEL, AND GREATER LEGROOM**



**29 GPM CCLS (CLOSED CENTER LOAD SENSING)
HYDRAULICS**



**ALL M7 MODELS COME STANDARD WITH
4-SPEED LIVE-INDEPENDENT PTO**

M6 SERIES

COMFORT AND PERFORMANCE, ALL-IN-ONE

UTILITY TRACTOR



104.5-141.4 HP



GRAND X CAB IS THE LARGEST IN ITS CLASS



KUBOTA SEMI-POWERSHIFT TRANSMISSION



AUTO 2WD/4WD LETS YOU MOVE SMOOTHLY AT HIGH RANGE, SAVES FUEL, AND REDUCES TIRE WEAR.



SAVE

\$3,000

EXCLUDES M6-1¹¹

+

SAVE

\$1,000

WHEN YOU PURCHASE A LOADER¹¹

M6S SERIES



UTILITY TRACTOR



114 HP



SWING SHIFT PLUS WITH DUAL SPEED TRANSMISSION



KUBOTA 4 CYLINDER, 3.8 CU. IN. DIESEL ENGINE



BEVEL-GEAR FRONT-WHEEL DRIVE FOR A TIGHT TURNING RADIUS

SAVE

\$2,500¹²

HAY TOOLS

MORE YIELD FROM YOUR FIELD



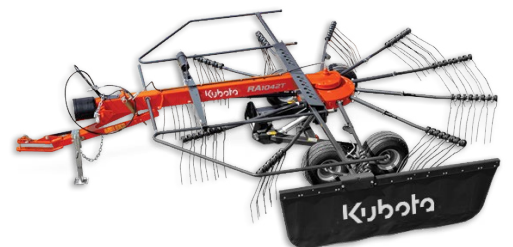
DISC MOWER CONDITIONERS

Cutting Width: 9'2" to 15'5"



PLAIN DISC MOWERS

Cutting Width: 5' 5" to 13' 1"



RAKES

Working Width: 11'6" to 27'7"



TEDDERS

Working Width: 17' 1" to 43' 8"



WRAPPERS

Hitch Type: 3 pt hitch and Pull Type



BALE CHOPPERS

Max Bale Size: 53" x 82"

0%

FOR 60 MONTHS FINANCING OAC¹⁷ (2.17%) EFFECTIVE APR

2 YEAR WARRANTY

ON ALL AGRICULTURE IMPLEMENTS²⁰

CROP PRODUCTION

**EQUIPMENT AND IMPLEMENTS TO BOOST
PRODUCTIVITY AND PROFITABILITY.**



CD COMPACT DISCS



RM & RS PLOUGHS



PH POWER HARROWS



**CU TINE
CULTIVATORS**



**VS PENDULUM
SPREADERS**



**DS DISC
SPREADERS**



SH SEED BOXES



**PRECISION
FARMING TERMINALS**



SE MULCHERS

0%

FOR 60 MONTHS FINANCING OAC¹⁹ (2.17%) EFFECTIVE APR

**2 YEAR
WARRANTY**

ON ALL AGRICULTURE IMPLEMENTS²⁰

SEEDING & TILLAGE TOOLS



TURBO-MAX®

8.5' to 48' Working Width



TERRA-MAX

20' to 40' Working Width



FOLDING MIN-TILL DRILLS

BD7600 - 26' to 50' Working Widths



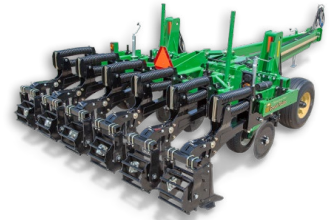
MAX-CHISEL™

9 to 19 Shank



FLEX HARROW

18' to 60' Working Widths



SUB-SOILER

3 to 12 Shank



FOLDING NO-TILL DRILLS

2N-2410 & 2N-3010 - 24' & 30' Pull Type



MOUNTED MIN-TILL DRILLS

1200, 1500 & 2000 - 12', 15' & 20' Working Widths

0%

FOR 60 MONTHS FINANCING OAC¹⁸ (3.44%) EFFECTIVE APR

2 YEAR WARRANTY

ON ALL AGRICULTURE IMPLEMENTS²⁰


SSV SERIES

SPACIOUS COMFORT MEETS
SUPERB PERFORMANCE.

SKID STEER LOADERS

 **DRIVEN BY THE POWERFUL
KUBOTA ENGINE**

 **LARGE CAB WITH ISO
PILOT CONTROLS**

 **QUICK COUPLER OPTION**

 **VERTICAL LIFT DESIGN
MAKING IT EASY TO DUMP
INTO TRUCKS**

GET
500
HOURS

**PLANNED MAINTENANCE
INCLUDED**

WHEN YOU PURCHASE
ANY SSV¹³



0%

FOR 48 MONTHS FINANCING OAC
(3.37%) EFFECTIVE APR¹⁴

R40 SERIES

WORK WITH MORE COMFORT



THE ALL-NEW
SVL75-3



74.5 HP



POWERED WITH CLEAN-BURNING TIER IV FINAL KUBOTA ENGINES



AVAILABLE IN STANDARD AUX. FLOW OR HIGH FLOW OPTION



WIDEST CAB IN THE MARKET WITH ROLL-UP DOOR.



LOW EFFORT HYDRAULICS PILOT CONTROLS PROVIDE MAXIMUM FEEL AND PRECISION



OUTSTANDING VERTICAL LIFT - 122.7 HINGE PIN HEIGHT WITH SELF-LEVELING

GROUND-BREAKING POWER AND PERFORMANCE U SERIES

1 TO 5.5 TON, ZERO/ TIGHT TAIL SWING EXCAVATORS



DRIVEN BY THE
POWERFUL KUBOTA
ENGINE



AVAILABLE IN CANOPY
AND CAB MODELS
DESIGNED FOR
OPERATOR COMFORT



ZERO/TIGHT-TAIL SWING

U55 SERIES

0% (3.44%)

FOR 48 MONTHS FINANCING OAC¹⁵

EFFECTIVE APR

CONVENTIONAL TAIL SWING EXCAVATORS



EXTENSIVE LINEUP WITH
MODELS 1 - 8.5 TON



SPACIOUS CAB WITH
ENHANCED ERGONOMICS FOR
OPERATOR COMFORT



ALL-ROUND VERSATILITY WITH
EXCEPTIONAL BREAKOUT
FORCE



CONVENTIONAL TAIL SWING
ENSURES EXCELLENT
STABILITY AND SAFETY

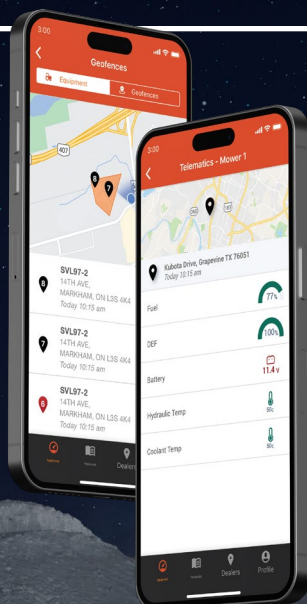
KX SERIES

ORANGE MAINTENANCE NO TIME FOR DOWNTIME

FOCUS ON WHAT'S IMPORTANT.

Plan your uptime and help protect your equipment with Kubota Orange Maintenance. Helping you to reduce your operating costs, while keeping your equipment working at peak performance.

GOODNIGHT, SLEEP TIGHT.



TELEMATICS

-  **MONITOR VITAL STATS**
-  **ADVANCED LOCATION TRACKING**
-  **PREVENT RESTART**
-  **ADDED LAYER OF SECURITY**
-  **CONNECT TO FLEET MANAGEMENT PLATFORMS**

ATTACHMENTS THAT WORK AS HARD AS YOU DO

0%

FOR 36 MONTHS FINANCING OAC¹⁶
(4.72%) EFFECTIVE APR



POST HOLE DIGGERS

6" to 36" Auger Bits

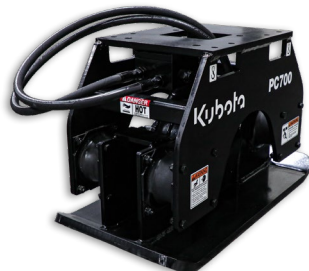


PLATE COMPACTOR



POWER RAKE

Non-Angled Working Width
72" to 90"



BOX BLADE

72.0" to 96.0" Working Widths



SNOW PUSHER

96.0" Working Width



TRENCHER

Digging depths of 48" or 60"



SNOWBLOWERS

66.0" to 84" Working Widths



HOPPER BROOM

74" and 84" Working Widths

For all offers: Prices and payments include freight and other applicable fees (including environmental fees, administration fees, set-up fees, and dealer fees). Taxes, delivery fees, insurance and registration are extra. Dealer may sell for less. Dealer order/trade may be necessary (but may not be available in all cases). Some restrictions apply. Offers valid only at participating dealers in Canada and are subject to change, cancellation or extension at any time without notice or obligation. Minimum down payment of 10% required for financing offers on turf and agricultural products. Specifications, features, illustrations and equipment shown are based on the latest available information at the time of publication. Some models are shown with optional accessories available at extra cost. 1 Representative finance example for the BX1880V-1: \$16,125.00 financed at 0% equals \$89.00 bi-weekly for 84 months. Financing available on approved credit. † Discounts on select LandPride and RadTech attachments for this tractor are \$300 each, up to a maximum of \$900. Discount(s) apply before tax and require the purchase of the power unit. Attachments purchased individually do not qualify for this discount. †† Discounts on select LandPride and RadTech attachments for this tractor are \$300 each, up to a maximum of \$900. Discount(s) apply before tax and require the purchase of the power unit. Attachments purchased individually do not qualify for this discount. 2 BX23SLBB-T-1: \$32,823.00 financed at 0% (1.95% effective APR which factors in \$1,500.00 in stackable cash, plus \$2,068.56 in non-stackable cash that cannot be combined with finance offers) equals \$175.00 bi-weekly for 84 months. \$909.76 down payment required. Cost of borrowing is \$2,068.56 for a total obligation of \$32,823.00. 182 bi-weekly payments required for 84 months. 3 Representative finance example for the BX1880V-1: \$16,125.00 financed at 0% equals \$89.00 bi-weekly for 84 months. Financing available on approved credit. 4 Discount(s) available on a new and previously unregistered B01 is \$900. Offer applies to the bundled package consisting of: (i) B2301HSD-1 power unit; and (ii) LA435 loader. Components of the Bundle may be purchased separately, as follows: (i) B2301HSD-1 \$22,922.00; and (ii) LA435 loader: \$4,566.00; Representative finance example for the Bundle: \$27,478.00 financed at 0% (2.10% effective APR which factors in \$1,714.63 in non-stackable cash that cannot be combined with finance offers) equals \$295.00 per month for 84 months. \$3,491.00 down payment required. Cost of borrowing is \$1,714.63 for a total obligation of \$27,478.00. Financing available on approved credit. 5 Offer applies to the bundled package consisting of: (i) L2501HST power unit; and (ii) LA526FL loader. Components of the Bundle may be purchased separately, as follows: (i) L2501HST \$26,020.00; and (ii) LA526FL loader: \$8,272.00; Representative finance example for the Bundle: \$35,771.00 financed at 0% (2.00% effective APR which factors in \$600.00 in stackable cash, plus \$2,139.82 in non-stackable cash that cannot be combined with finance offers) equals \$365.00 per month for 84 months. \$3,431.18 down payment required. Cost of borrowing is \$2,139.82 for a total obligation of \$35,771.00. 6 Z202 (2232KW-42): Discount(s) available on a new and previously unregistered Z200 is \$400. \$6,566.00 financed at 0% (1.59 % effective APR which factors in \$400.00 in stackable cash, plus \$151.75 in non-stackable cash that cannot be combined with finance offers) equals \$84.00 bi-weekly payments for 36 months. 78 payments required bi-weekly for 36 months. \$0 down payment required. Cost of borrowing is \$151.75 for a total obligation of \$6,566.00. 7 LX2610HSDCC: \$39,957.00 financed at 0% (1.94% effective APR which factors in \$600.00 in stackable cash, plus \$2,283.59 in non-stackable cash that cannot be combined with finance offers) equals \$425.00 monthly for 84 months. \$4,256.81 down payment required. Cost of borrowing is \$2,283.59 for a total obligation of \$39,957.00. 8 Discount(s) available on a new and previously unregistered T90 is \$350. Representative finance example for the T90 (T20908R-42): \$5,871.00 financed at 0% (1.55% effective APR which factors in \$350.00 in stackable cash, plus \$133.94 in non-stackable cash that cannot be combined with finance offers) equals \$76.00 bi-weekly payments for 36 months. 78 payments required bi-weekly for 36 months. \$0 down payment required. Cost of borrowing is \$133.94 for a total obligation of \$5,871.00. ††† T90/ GR attachment discount Discounts on select LandPride and RadTech attachments for the GR or the T90 are \$400 each, up to a maximum of \$400. Discount(s) apply before tax and require the purchase of the power unit. Attachments purchased individually do not qualify for this discount. 9 M7-132P-KVT: \$229,053 financed at 2.99% (4.65% effective APR which factors in \$10,447.12 in non-stackable cash that cannot be combined with finance offers) equals \$2,715 per month for 84 months. \$23,508.00 down payment required. Cost of borrowing is \$30,739.44 for a total obligation of \$249,145.32. 10 M7 Warranty The 4 year/4000h and 6 years/ 4000h powertrain warranty on M7 offer is valid in Canada on products distributed by Kubota Canada Ltd. This warranty offer leads the industry for tractors sold 120-170 HP for hours and length of time. 11 M6 - Discount(s) available on a new and previously unregistered M6 is \$3000. Discount on a loader is \$ 1000. Discount applies before tax and requires the purchase of the power unit. Loaders purchased individually do not qualify for this discount. Offer cannot be applied on past transactions, and has no cash surrender value. 12 M6S - Discount(s) available on a new and previously unregistered M6S is \$3000. 13 The Planned Maintenance offer includes: (1) this package includes but is not limited to, filters, fluids, and regular maintenance items as outlined in the maintenance plan documentation provided with the construction equipment; (2) the customer will be responsible for contacting their dealer for the initial 50 hour service and at the 500-hour interval of the construction equipment's service life during this period to book a scheduled maintenance visit; and (3) the customer will be responsible for performing daily checks, regular visual inspections, and general monitoring of the construction equipment as outlined in the maintenance section of the construction equipment's operator manual. Costs associated with transport to and from the dealership are not included in this maintenance package. Promotional Planned Maintenance offer expires 30 November 2023. 14 Representative finance example: for R640: \$145,024.70 financed at 0% (3.37% effective APR which factors in \$8,233.99 in non-stackable cash that cannot be combined with finance offers) equals \$2,719.31 monthly for 48 months. \$14,498 down payment required. Cost of borrowing is \$8,233.99 for a total obligation of \$145,024.70. 15 Representative finance example: for U55: \$117,595.05 financed at 0% (3.44% effective APR which factors in \$6,816.76 in non-stackable cash that cannot be combined with finance offers) equals \$2,205.00 monthly for 48 months. \$11,755 down payment required. Cost of borrowing is \$6,816.76 for a total obligation of \$117,595.05. 16 Representative finance example: for SVL75-2: \$125,274.98 financed at 0% (4.72% effective APR which factors in \$7,395.46 in non-stackable cash that cannot be combined with finance offers) equals \$3,131.44 monthly for 36 months. \$12,543 down payment required. Cost of borrowing is \$7,395.46 for a total obligation of \$125,274.98. 17 Representative finance example: for RA Rake RA108CR: \$11,519 financed at 0% (2.17% effective APR which factors in \$508.15 in non-stackable cash that cannot be combined with finance offers) equals \$165.00 monthly for 60 months. \$1,619.08 down payment required. Cost of borrowing is \$508.15 for a total obligation of \$11,519. 18 Representative finance example: for Max Chisel: \$119,770.63 financed at 0% (3.44% effective APR which factors in \$7,234.91 in non-stackable cash that cannot be combined with finance offers) equals \$1,796.56 monthly for 60 months. \$11,977.06 down payment required. Cost of borrowing is \$7,234.91 for a total obligation of \$119,770.63. 19 Representative finance example: for Max Chisel: \$119,770.63 financed at 0% (3.44% effective APR which factors in \$7,234.91 in non-stackable cash that cannot be combined with finance offers) equals \$1,796.56 monthly for 60 months. \$11,977.06 down payment required. Cost of borrowing is \$7,234.91 for a total obligation of \$119,770.63. 20 Kubota Canada Ltd. offers this limited warranty to customers who operate and maintain their Kubota product as described in the Operator's Manual. Warranty coverage on your Kubota product starts upon delivery of the product. Kubota Canada Ltd. warrants all parts (except as listed), implements and replacement parts to be free from defects in materials or workmanship during the warranty period. This warranty is only valid in Canada on Canadian Market Products distributed by Kubota Canada Ltd. 21 Representative finance example for the BX1880V-1: \$16,125.00 financed at 0% equals \$89.00 bi-weekly for 84 months, which takes into account \$1,000.00 in stackable discounts. \$0 down payment required. Cost of borrowing is \$0 for a total obligation of \$16,125.00. 182 payments required bi-weekly for 84 months. Financing available on approved credit. Offers cannot be applied on past transactions, and have no cash surrender value. Although descriptions are believed to be correct, accuracy cannot be guaranteed. We reserve the right to make changes at any time, without notice or obligation to specifications, accessories, materials, models, prices, payments and other information. Offers valid until 30 November 2023. See your participating Kubota dealer or visit www.kubota.ca for complete details.

